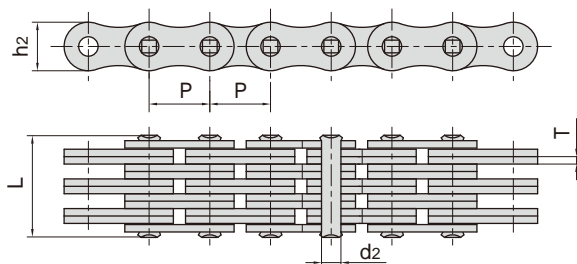
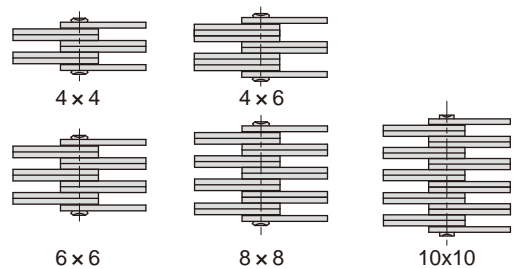


堆高机用板式链

Leaf chains for sky stacker



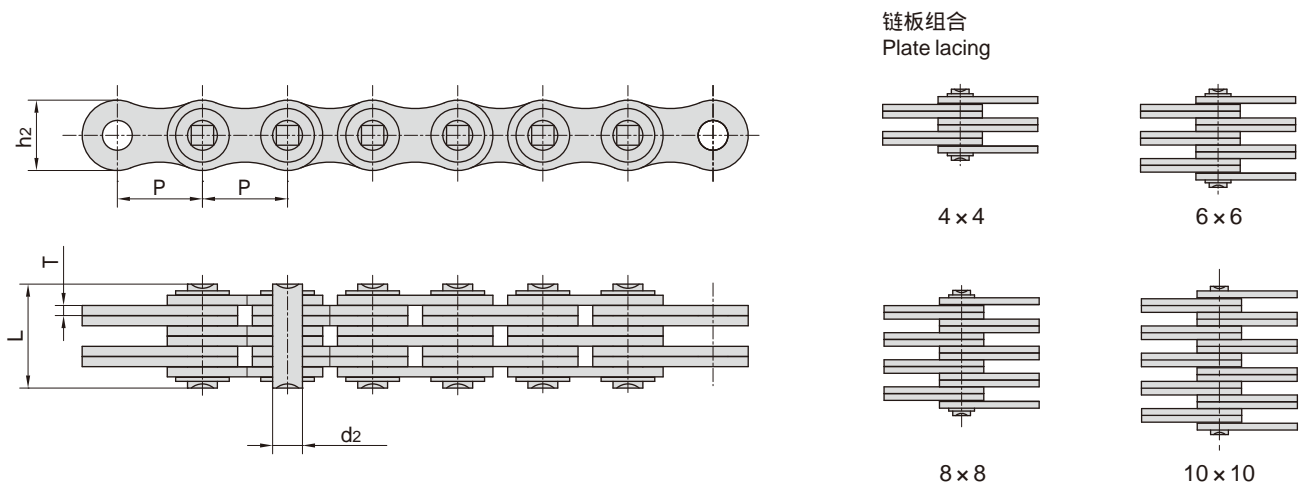
链板组合
Plate lacing



Chain No.	节距	链板组合	链板高度	链板厚度	销轴直径	销轴长度	抗拉强度	平均抗拉强度	每米长重
	Pitch	Plate lacing	Plate depth	Plate thickness	Pin diameter	Pin length	Tensile strength	Average tensile strength	Weight per meter
	P mm		h2 max mm	T max mm	d2 max mm	L max mm	Q min kN/lbf	Q0 kN	q kg/m
LH2044(DG)	31.75	4 × 4	30.18	4.80	11.10	43.8	231.3/51996	254.4	7.60
LH2066(DG)	31.75	6 × 6	30.18	4.80	11.10	64.0	347.0/78008	380.0	11.65
LH2444(DG)	38.10	4 × 4	36.20	5.60	12.70	51.3	302.5/68002	332.8	10.30
LH2466(DG)	38.10	6 × 6	36.20	5.60	12.70	75.5	453.7/101992	475.0	11.52
LH2488(DG)	38.10	8 × 8	36.20	5.60	12.70	96.5	605.0/136004	665.5	21.60
LH2844(DG)	44.45	4 × 4	42.20	6.40	14.27	57.5	382.6/86008	400.0	14.12
LH2846(DG)	44.45	4 × 6	42.20	6.40	14.27	73.0	382.6/86009	400.0	17.63
LH2866(DG)	44.45	6 × 6	42.20	6.40	14.27	83.2	706.0/158709	810.0	21.09
LH3234(DG)	50.80	3 × 4	48.20	7.20	17.46	57.9	440.4/99002	506.0	15.49
LH3244(DG)	50.80	4 × 4	48.20	7.20	17.46	65.1	573.8/128990	602.0	17.67
LH3246(DG)	50.80	4 × 6	48.20	7.20	17.46	80.0	573.8/128990	602.0	22.20
LH3266(DG)	50.80	6 × 6	48.20	7.20	17.46	96.7	867.4/194991	911.0	26.70
LH3288(DG)	50.80	8 × 8	48.20	7.20	17.46	123.3	1156.5/259981	1214.0	35.00
LH4044(DG)	63.50	4 × 4	60.33	9.91	23.81	91.5	867.4/194992	954.1	31.60
LH4066(DG)	63.50	6 × 6	60.33	9.91	23.81	131.2	1301.1/292487	1496.0	48.10
LH2466F2(DG)	38.10	6 × 6	36.20	5.60	12.70	75.5	648.0/145670	710.0	11.52
LH2488F4(DG)	38.10	8 × 8	36.20	5.60	12.70	97.3	800.0/179840	880.0	21.69
LH3266(DGF1)	50.80	6 × 6	48.20	7.20	17.46	94.2	993.6/223361	1143.0	26.35
LH3288(DGF2)	50.80	8 × 8	48.20	7.20	17.46	124.5	1364.6/306774	1500.0	35.09
LH3288F7(DG)	50.80	8 × 8	48.20	7.20	17.46	127	1513.0/340122	1664.3	35.19
BL2088F2(DG)	63.50	8 × 8	58.20	9.70	23.81	170.0	1734.8/389983	1995.0	56.74
LL2466(DG)	38.10	6 × 6	33.40	5.00	14.63	67.4	510.0/114648	536.0	13.00
LL2866(DG)	44.45	6 × 6	36.00	6.00	15.90	80.2	600.0/134880	660.0	16.31
LL4066(DG)	63.50	6 × 6	52.70	8.00	22.89	106.5	1080.0/242793	1245.0	31.62
LL4088(DG)	63.50	8 × 8	52.70	8.00	22.89	140.0	1400.0/314733	1650.0	42.10
LL2844(DGF1)	44.45	4 × 4	36.00	6.00	15.90	54.7	400.0/89923	450.0	10.92
LL2866(DGF1)	44.45	6 × 6	36.00	6.00	15.90	80.2	650.0/146120	715.0	16.20
LL3244F2(DG)	50.80	4 × 4	43.10	6.00	17.76	55.0	520.0/116900	570.0	12.62
LL3244F6(DG)	50.80	4 × 4	42.00	6.00	17.81	57.5	520.0/116900	570.0	12.35
LL3266F6(DG)	50.80	6 × 6	42.00	6.00	17.81	81.7	780.0/175344	858.0	18.30
LL3266(DGF1)	50.80	6 × 6	42.00	6.40	17.81	86.0	780.0/175344	858.0	19.53
LL3266F3(DG)	50.80	6 × 6	43.10	6.00	17.76	79.9	780.0/178344	858.0	18.84
LL3288F6(DG)	50.80	8 × 8	42.00	6.00	17.81	106.0	1040.0/233792	1144.0	24.30
LL3288(DGF2)	50.80	8 × 8	42.00	6.40	17.81	112.0	1040.0/233792	1144.0	25.91
LL4088F2(DG)	63.50	8 × 8	52.70	8.20	22.89	140.0	1440.0/323725	1670.0	42.39

堆高机用板式链

Leaf chains for sky stacker



Chain No.	节距	链板组合	链板高度	链板厚度	销轴直径	销轴长度	抗拉强度	平均抗拉强度	每米长重
	Pitch	Plate lacing	Plate depth	Plate thickness	Pin diameter	Pin length	Tensile strength	Average tensile strength	Weight per meter
	P mm		h2 max mm	T max mm	d2 max mm	L max mm	Q min kN/lbf	Q0 kN	q kg/m
LL3244(DG)	50.80	4 × 4	42.00	6.40	17.81	65.0	520.0/116895	598.0	13.73
LL3266(DG)		6 × 6				90.8	780.0/175344	897.0	19.94
LL3288(DG)		8 × 8				117.0	1040.0/233792	1196.0	26.10
LL321010F10(DG)	50.80	10 × 10	42.00	6.00	17.81	134.3	1300.0/292240	1430.0	30.89
LL4066F5(DG)	63.50	6 × 6	52.70	8.00	22.89	112.7	1080.0/242794	1245.0	32.59
LL4088F4(DG)	63.50	8 × 8	52.70	8.00	22.89	144.0	1400.0/314720	1540.0	42.38